

ORIGINALNÍ PRÁCE

COMPARISON OF MW\PHARM 3.30 (DOS) AND MW\PHARM ++ (WINDOWS) VERSIONS OF PHARMACOKINETIC SOFTWARE FOR PK/PD MODELLING OF VANCOMYCIN IN CONTINUOUS ADMINISTRATION

Fig. 4. Bland-Altman analysis of predicted vancomycin concentrations by (A) WIN1 and DOS1, (B) WIN2 and DOS1, (C) WIN3 and DOS1, (D) WIN4 and DOS1, (E) DOS1 and DOS2

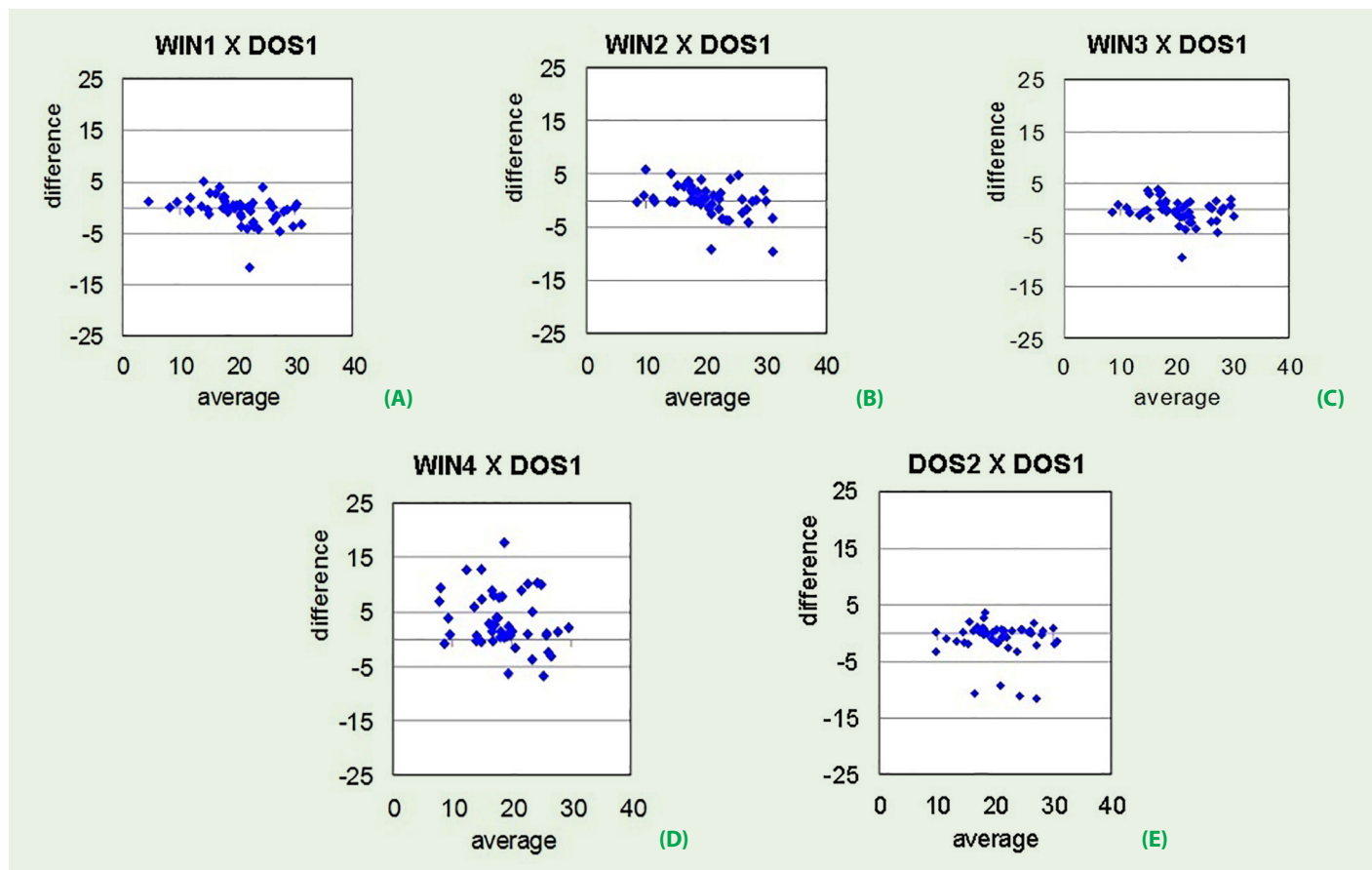


Fig. 5. Comparison of vancomycin concentrations (A) WIN1 model, (B) WIN2 model, (C) WIN3 model, (D) WIN4 model, (E) DOS1 model. The full line represents linear regression, while the dashed line is the line of identity ($y = x$). $R =$ Pearson's R , $P < 0.0001$

