

Fig. 2. Bland-Altman analysis of measured and predicted vancomycin concentrations by (A) WIN1, (B) WIN2, (C) WIN3, (D) WIN4, (E) DOS1, (F) DOS2

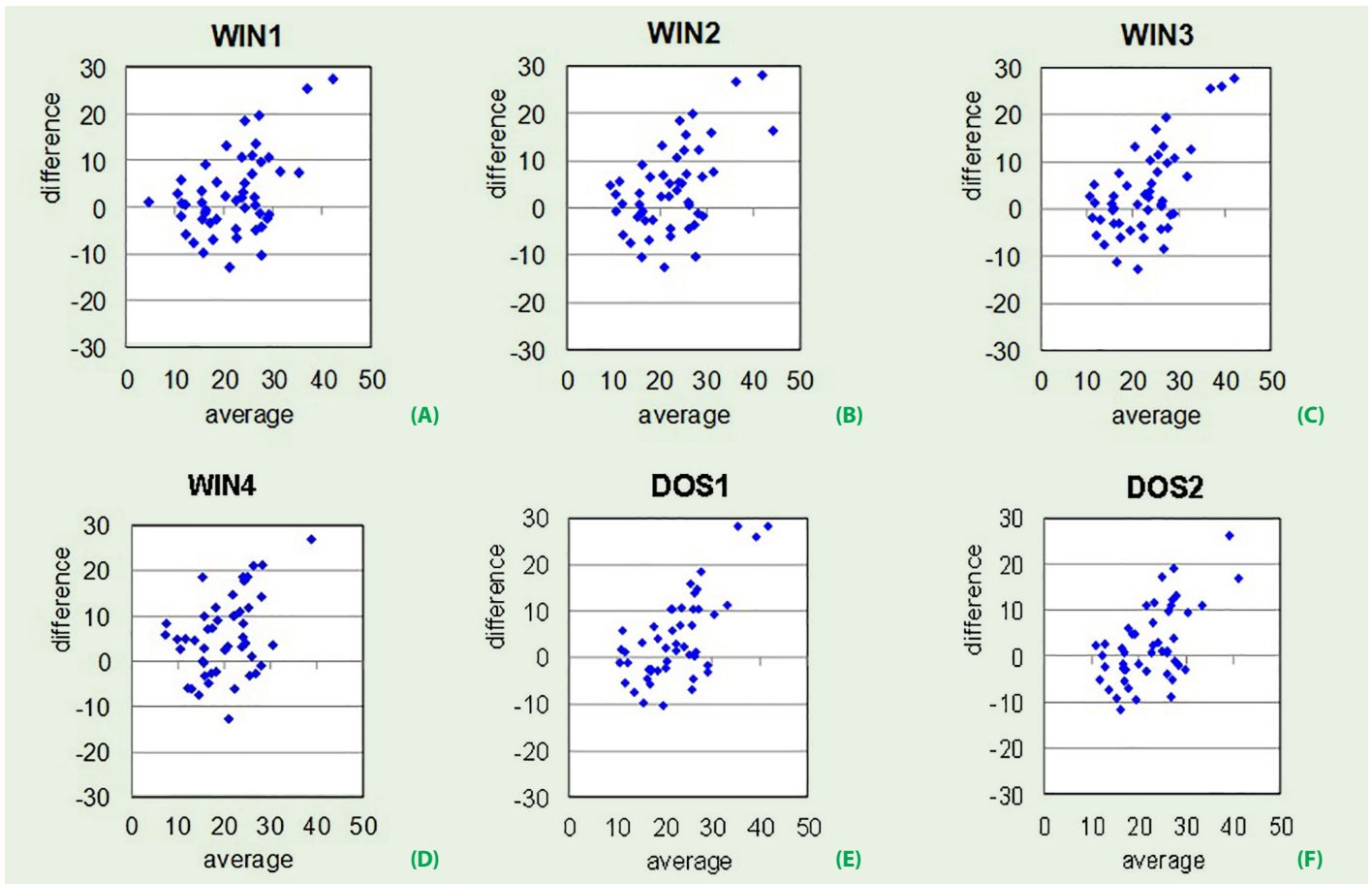


Fig. 3. Comparison of vancomycin concentrations predicted by DOS1 and predicted by (A) WIN1 model, (B) WIN2 model, (C) WIN3 model, (D) WIN4 model, (E) DOS1 model. The full line represents linear regression, while the dashed line is the line of identity ($y = x$). $R =$ Pearson's R

